

Icons of Hollywood Auction

DECEMBER 15 - 16, 2011



Profiles
IN HISTORY



226. LAWRENCE OF ARABIA COMPLETE SET OF (12) DELUXE ROADSHOW LOBBY CARDS. (Columbia, 1962) Certain epic and highly-publicized films were given special reserved-seat advance screenings referred to as "Roadshow", and unique display materials were often created for them that did not carry over to their regular theatrical releases. This richly colored, gloss print set of twelve 11" x 14" lobby cards with no credits for David Lean's masterpiece *Lawrence of Arabia* is just that, an exceedingly rare and special artifact for a most significant film. A few scattered pinholes, Very Fine condition overall. Note: we have only previously seen one complete set of 12 for this release, and a handful of individual loose cards. **\$600 – \$800**



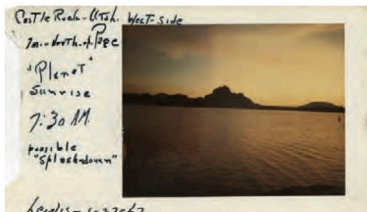
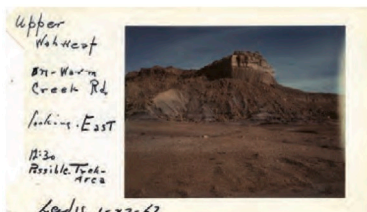
227. MUTINY ON THE BOUNTY NEAR-MINT ORIGINAL LOBBY CARD. (MGM, 1935) Virtually mint, unrestored original release 11" x 14" lobby card showing a confrontation between Clark Gable and Charles Laughton. **\$200 – \$300**



228. NATIONAL VELVET ORIGINAL LOBBY CARD OF ELIZABETH TAYLOR IN RACING SILKS. (MGM, 1944) A very young (and undersized for her age) Elizabeth Taylor spent several months gaining weight and strength (including "chest enlargement exercises") to make herself marketable for this strenuous equestrian role, her first starring appearance at just age 11. Arguably best card in the set, depicting Taylor posing as a male jockey in the racing silks recently auctioned by this auction house in the first Debbie Reynolds costume sale. **\$200 – \$300**



229. PLANET OF THE APES COLLECTION OF (35) UK FRONT-OF-HOUSE LOBBY CARDS FROM ALL FIVE FILMS IN THE ORIGINAL SERIES. Collection of 35+ original UK front-of-house lobby cards from all five films in the *Planet of the Apes* series including *Planet of the Apes* (7 cards), *Beneath the Planet of the Apes* (6 cards), *Escape from the Planet of the Apes*, *Battle for the Planet of the Apes* and *Conquest of the Planet of the Apes*. Very good to Fine. **\$200 – \$300**



763. ORIGINAL LOCATION SCOUTING POLAROIDS OF LAKE POWELL AREA FOR CRASH SEQUENCE OF *PLANET OF THE APES*. (TCF, 1968) Collection of 15 exterior Lake Powell area Polaroids and 4 interior shots of a potential location office, detailing the reconnaissance for the spectacular crash sequence and trek through the desert by Charlton Heston and his fellow astronauts that comprise the taut first act of Franklin Schaffner's classic, *Planet of the Apes*. Numerous views of the Lake and desert are shown and bear numerous handwritten notations in the margins. Included are 4 interior shots for a location office. Image sizes are 3 ½ in. x 4 ½ in. with the left margins exhibiting curling. Housed in the original box. **\$200 – \$300**



764. *PLANET OF THE APES* SCREEN-WORN BACKGROUND GORILLA MASK. (TCF, 1968) In order to create a literal planetful of apes, John Chambers devised these simple but effective masks, worn in the background behind actors Roddy McDowall, Kim Hunter and Charlton Heston. Beyond the fact that this rubber background mask is still supple and has all its original paint and mohair hair, it also still retains the hairy backflap Chambers devised to ingeniously hide the cut in the back that enabled the actor to put the mask on in the first place – the flap just Velcros over the slit and the mask is transformed into what appears to be a real ape head. **\$4,000 – \$6,000**



765. ORANGUTAN COSTUME FROM *PLANET OF THE APES*. (TCF, 1968) Complete Orangutan costume consisting of a distinctive leather-trimmed tunic with zipper and hook closure, pants and the distinctive shoes shaped like splayed hands. Complete Orangutan costumes from the original *Planet of the Apes* are among the hardest costumes to find with an estimated less than 20 ever made, only a few of which survive. Tunic has internal Western Costume Co. label typewritten "2776-1" [chest] "41" [sleeve] "17 ½." Pants with internal Western Costume stamp and shoes handwritten "8." Exhibits only slight wear from production use. **\$6,000 – \$8,000**



766. FEMALE CHIMPANZEE COSTUME FROM *PLANET OF THE APES*. (TCF, 1968) Complete female chimpanzee costume consisting of leather-trimmed tunic with zipper and hook closure, pants and the distinctive shoes shaped like splayed hands. Tunic has internal Western Costume Co. label typewritten "2771-1" [chest] "37" and Western Costume Co. stamp. Pants with internal Western Costume Co. typed "2771-4" [waist] "33" [inseam] "32" and Western Costume stamp. Shoes are handwritten "8 1/2." Includes green wool gloves. Exhibits slight fading on tunic and pants. **\$6,000 – \$8,000**

767. GORILLA COSTUME FROM *PLANET OF THE APES*. (TCF, 1968) Foreground Gorilla costume consisting of ribbed purple leather vest with zipper and snap closure, pants and tunic. All with Western Costume Co. typed labels: vest with "2954-1" [chest] "38," tunic with "2954-2" [chest] "38" [sleeve] "18," and pants with "2954-3" [waist] "32" [inseam] "31" with additional handwritten label, "32/32 A. Brown." Vest exhibits rubbing wear along ribbed piping. Tunic and pants exhibit some fading on the sleeves and legs, small hole on tunic's left sleeve. **\$6,000 – \$8,000**



768. PLANET OF THE APES STUNT BILLY CLUB. (TCF, 1968) Whenever the gorillas needed to get tough with astronaut Charlton Heston, they would typically bang him about the head with one of their billy clubs. Wooden clubs were a part of every gorilla costume, but this extremely rare stunt club, made of foam rubber expertly detailed to look like wood, was likely used only when it would interact with another actor – ie Heston or Linda Harrison. Measures 15 in. long and exhibits some flaking along the handle and head from production use. This is the only stunt club we've ever encountered. **\$4,000 – \$6,000**

JOHN CHAMBERS

The following 33 lots are from the estate of groundbreaking makeup effects legend John Chambers (1923–2001). Chambers' amazing work is seen in such films and television shows as *Planet of the Apes* (1968), *The List of Adrian Messenger* (1963), *The Outer Limits* (1963), *The Munsters* (1964), *Lost in Space* (1965), *Mission Impossible* (1966) and *Star Trek: The Original Series* (Chambers created "Mr. Spock's" trademark pointed Vulcan ears). Chambers began his career in the Army during World War II, where he served as a dental technician. It was in this capacity that he found himself gaining a great deal of knowledge of repairing more than teeth—he began creating new ears, noses and chins for veterans ravaged by war. This experience landed Chambers at NBC in 1953 with a job in makeup. Though he developed many of his makeup innovations in the 1950s and 1960s, they are still in use today. His skull caps, for instance, are a standard in the business. For his efforts in *Planet of the Apes*, Chambers received an honorary Academy Award at the 1969 Oscars ceremony, and throughout his career he received many other honors, most notably an Emmy and a star on the Hollywood Walk of Fame. John Chambers was also given the highest civilian award from the CIA for his help with numerous "Mission: Impossible-type" transformational disguises he devised for operatives in secret missions. Despite all of his accomplishments, it was Chambers' charitable work helping injured veterans and firefighters and his work for the CIA that gave him his greatest satisfaction. John Chambers' expertise as a craftsman and innovator inspired a whole generation of makeup artists and helped to bring the art of makeup effects into the limelight.



769. JIMMY DURANTE "SCHNOZZLE" PLASTER CASTING, FACIAL MOLD AND SCRAPBOOK WITH NUMEROUS ARTICLES. Plaster casting of Jimmy Durante's nose taken by John Chambers in 1959 for the Smithsonian Institution. Chambers first made a liquid rubber mold, then cast it in synthetic stone and finally painted it a golden bronze. Durante's nose was presented to the Smithsonian Institution's anthropology department for exhibition. The casting is backed with felt for display and measures 3 ¼ in. x 3 1/8 in. Includes a plaster lifemask of Durante and Chambers' personal scrapbook of newspaper clippings from early in his career, including numerous clippings from the story of Durante's nose casting. Rear board of scrapbook detached. **\$400 – \$600**

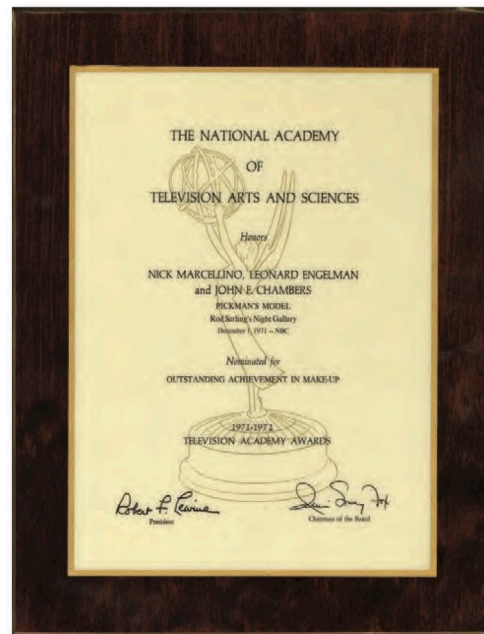
770. COLLECTION OF PHOTOGRAPHS SIGNED AND INSCRIBED TO JOHN CHAMBERS. John Chambers' personal NBC Pacific Division binder of 22 signed photographs personally inscribed to him as well as other candid photographs of him applying make-up and appliances to various stars including a rare sequence of Fred Astaire as *Mad Magazine's* "Alfred E. Newman." Signed photos include Fred Astaire, Kate Smith, Don Ameche, and Fay Wray. In addition are approx. 16 candid photographs of Chambers applying make-up to Natalie Wood, Maurice Evans and others. Some photos exhibit waviness from moisture. **\$300 – \$500**



771. JOHN CHAMBERS COLLECTION OF PHOTOGRAPHS INCLUDING BEHIND-THE-SCENES PHOTOGRAPHS WITH NUMEROUS STARS. Collection of 200+ glossy 8 in. x 10 in. candid portraits of John Chambers posing with numerous stars he did make-up for including: Vincent Price, Charlton Heston, Buster Keaton, Edward G. Robinson, Bob Hope, Lou Costello, Milton Berle, David Niven, Donna Reed, Burl Ives, Peter Lawford, Raymond Burr, Zsa Zsa Gabor and many others. Other highlights include behind-the-scenes portraits of Chambers working on *Lost in Space*, accepting his honorary Academy Award for *Planet of the Apes* and many others. Housed in his personal binders, one with "John Chambers Make-Up Dept." label. **\$300 – \$500**



772. COLLECTION OF 10+ JOHN CHAMBERS' PERSONAL SCRIPTS FOR THE OUTER LIMITS, SLAUGHTERHOUSE-FIVE, ETC. Collection of 10+ personal scripts for *Planet of the Apes* (studio copy titled *Planet of the Men*, 1968), *The Outer Limits* 1964 episode "The Chameleon," *Ssssss* (1972), *Slaughterhouse-Five* (1972), *A Man Called Horse Part II: The Return*, *Embryo* (1976, two drafts), *The Devil's Rain* (1975), *Love Story* (1970), *The Unseen* (1980), and others from unrealized projects. Some bear Chambers' handwritten annotations throughout and includes a 15 pg. typescript for Chambers' proposed book project. Exhibit wear and soiling. **\$300 – \$500**



773. JOHN CHAMBERS EMMY AWARDS PLAQUES AND OTHERS. 4 Emmy awards plaques awarded to John Chambers for Outstanding Achievement in Make-Up/Outstanding Achievement in any area of Creative Technical Crafts for the episode "Pickman's Model" from *Rod Serling's Night Gallery*, *Struggle for Survival/Primal Man*, *Twigs*, and *Beauty and the Beast Hallmark Hall of Fame*. Together with two other Sci-Fi convention award plaques. (One for *Planet Of The Apes*). Measure 10 ½ in. x 12 ½ in. **\$200 – \$300**

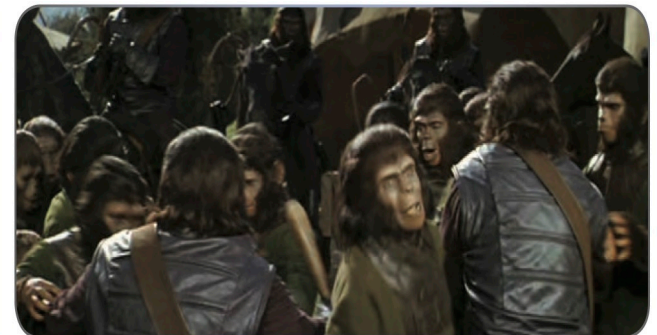
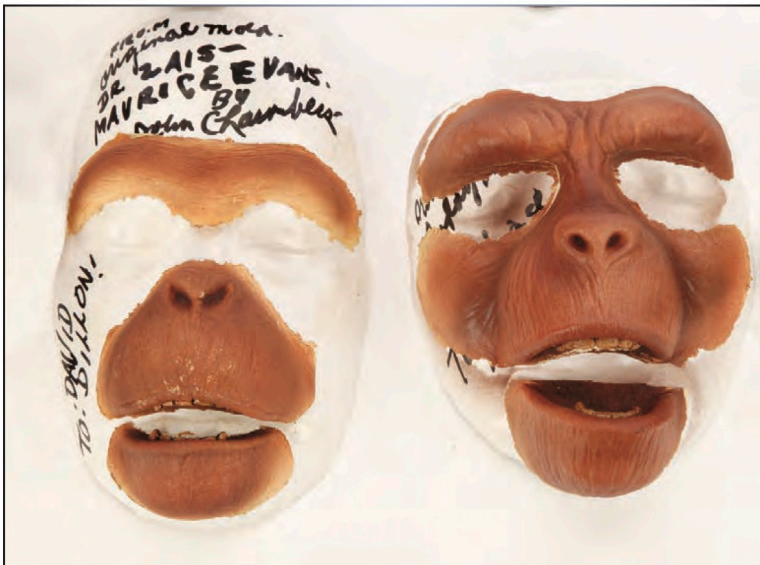


774. DAVID MCCALLUM "GWYLLIM GRIFFITHS" HEAD APPLIANCE FROM THE OUTER LIMITS EPISODE, "THE SIXTH FINGER". (ABC-TV, 1963-1965) One of the most recognizable characters from this imaginative series was David McCallum's role as "Gwyllim Griffiths," the small-town mining boy that becomes the molecular evolution experiment of Edward Mulhare "Professor Mathers." The experiments result in advanced evolutionary development resulting in a huge brain and a sixth finger. This is John Chambers' foam latex head appliance made for McCallum and is completely hand-painted and detailed. It exhibits minor cracking at the mouth and eyeholes but the condition remains remarkable given its age. With make-up artist magazine featuring John Chambers article. **\$2,000 – \$3,000**

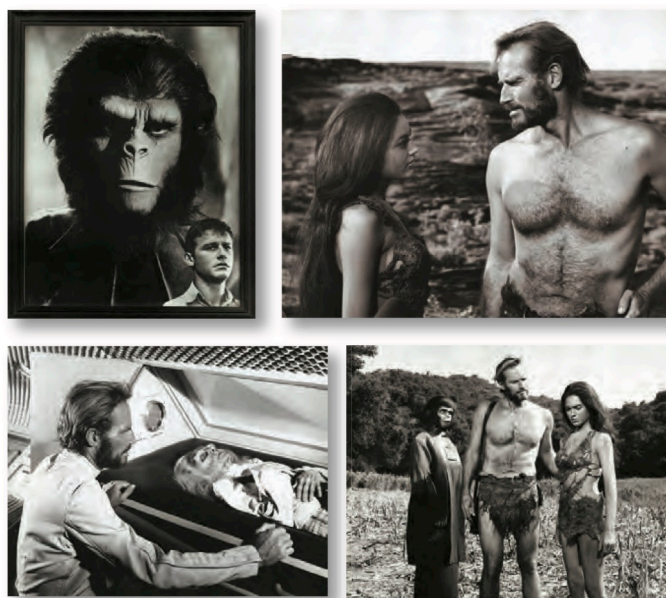


781. JOHN CHAMBERS PERSONAL PHOTO ALBUM FROM *PLANET OF THE APES* BEHIND-THE-SCENES MAKE-UP DEPARTMENT. (TCF, 1968) Chambers' personal album of 70+ *Planet of the Apes* make-up department candid photographs featuring Kim Hunter, James Gregory as "General Ursus," Ben Nye, Maurice Evans and many others taken behind-the-scenes on the set. Also includes 25+ 8 in. x 10 in. photos of Chambers applying appliances and make-up (most with extensive annotations in Chambers' hand on the verso), stills from the franchise, newspaper articles, promotional material and other ephemera. **\$400 – \$600**

779. COLLECTION OF COLOR TRANSPARENCIES FROM *PLANET OF THE APES*. (TCF, 1968) Collection of 60+ color transparencies (10) 2 ¼ in. and (50+) 4 in. x 5 in. featuring scenes from the film, publicity shots as well as candid on-set and behind-the-scenes shots of the principal cast. Condition is generally Fine. **\$300 – \$500**



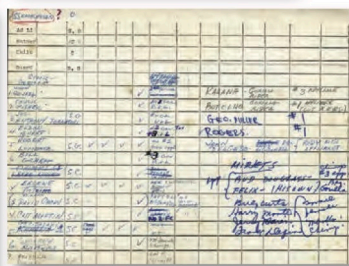
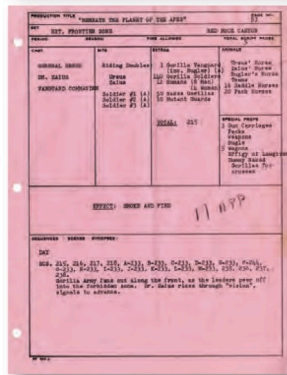
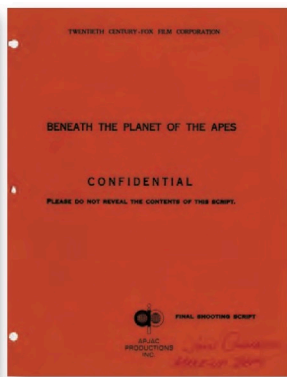
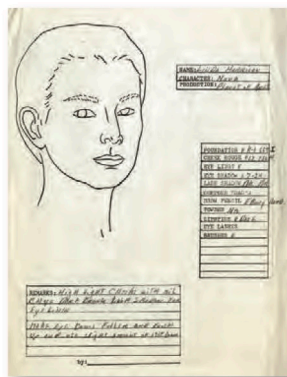
780. ASSORTMENT OF 10 PRODUCTION-MADE APE FACIAL APPLIANCES FROM *PLANET OF THE APES*. (TCF, 1968) Collection of 10 assorted Ape facial appliances of foam latex, each hand-painted and detailed. Each appliance was made from a master mold taken from the actor's head from which the appliances were made. Highlights include a Roddy McDowall "Cornelius" appliance and a Maurice Evans "Dr. Zaius" appliance which are mounted on vacuum formed lifemasks, each signed by John Chambers. All feature the distinctive Ape snouts and prominent chins that made Chambers' designs so iconic and endearing. Foam latex remains supple, a few exhibit cracks on the nose bridges and cheeks; otherwise, condition is remarkable. **\$3,000 – \$5,000**



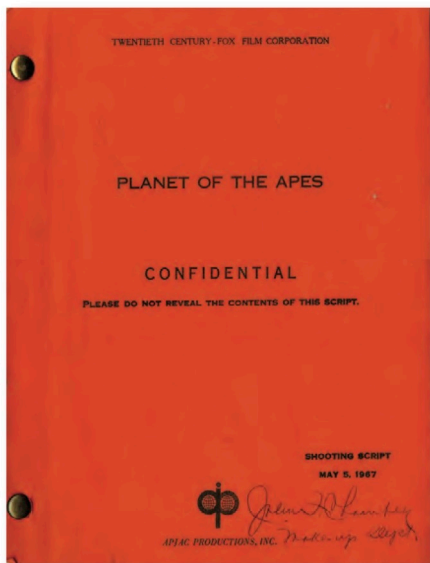
784. COLLECTION OF JOHN CHAMBERS *PLANET OF THE APES* PHOTOGRAPHS. (TCE, 1968) Collection of (13) gelatin silver semi-gloss borderless 11 in. x 14 in. photographs featuring the principal cast members in scenes from the film. With handwritten catalog numbers in pencil and tape removal remnants on the verso, one with production notations in ink. In addition, five (5) oversize 11 in. x 14 in. prints framed, featuring Roddy McDowall "Cornelius," Kim Hunter "Zira," and Maurice Evans "Zaius." Four are handwritten "*Property of John Chambers*" in his hand on the verso. Fine; with handling. **\$300 – \$500**



785. JOHN CHAMBERS SET OF *PLANET OF THE APES* TRADING CARDS. John Chambers' personal set of 40 *Planet of the Apes* trading cards featuring all the significant scenes from the film with descriptive captions. Cards measure 2 ½ in. x 3 ½ in. and are mounted on 8 ½ in. x 11 in. album leaves and housed in a red 3-ring binder with typed labels on the spine and front cover. **\$200 – \$300**



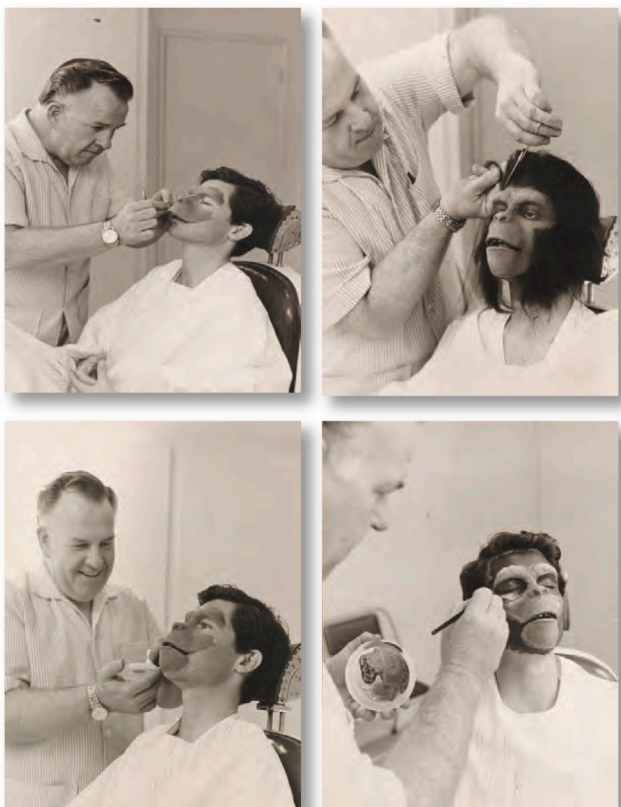
786. JOHN CHAMBERS' PERSONAL *PLANET OF THE APES* PRODUCTION BINDER WITH MAKE-UP DEPARTMENT PRODUCTION NOTES, CALL SHEETS AND *BENEATH THE PLANET OF THE APES* SCRIPT. (TCF, 1968 and 1970) John Chambers' personal attaché full of all manner of production work sheets for makeup, call sheets, schedules for appliance production, handwritten lists of how many appliances were required for each character/actor with breakdowns for gorillas, chimpanzees and orangutans, recipe mix for making small guns from latex, detailed makeup sheets for Linda Harrison's character "Nova," shooting script revision pages and many other documents. Approximately 250+ individual pieces, many with extensive handwritten notations in Chambers' hand. Includes Chambers' personal *Beneath the Planet of the Apes* rainbow final shooting script handwritten, "John Chambers Make-Up Dept." **\$600 – \$800**



787. *PLANET OF THE APES* JOHN CHAMBERS SIGNED MAKE-UP DEPARTMENT SCRIPT. (TCF, 1968) John Chambers' personal complete Shooting Script, dated May 5, 1967, with rainbow colored revision pages dated to June 9. Brad bound with original Studio stiff paper covers. Signed at the lower right cover in blue ink, "John Chambers, Make-up Dept." Inserted is a work sheet for various chimpanzee appliances needing repair annotated in Chambers' hand. **\$1,000 – \$1,500**



788. GROUP OF *PLANET OF THE APES* FRANCHISE SCRIPTS. Collection of John Chambers' personal scripts from the *Planet of the Apes* franchise including: *Beneath the Planet of the Apes* Revised Screenplay, *Escape from the Planet of the Apes* Final Screenplay and a First Draft of its working title, *The Secret of the Planet of the Apes*, pair of *The Battle for the Planet of the Apes* screenplays (First Draft and Revised), and *Planet of the Apes: The Gladiators*. All but one are rainbow scripts with revision pages, three are signed on the covers by Chambers, and some feature extensive handwritten notations by Chambers throughout. **\$400 – \$600**



789. JOHN CHAMBERS APPLYING MAKE-UP FOR *PLANET OF THE APES* AND 35MM MAKE-UP TEST FOR 1967. Collection of unique photographs of John Chambers making and applying make-up and appliances from *Planet of the Apes*. They range from 8 in. x 10 in. to 10 ½ in. x 13 ½ in. and mounted on illustration board likely for exhibition. Includes a 35mm Panavision print of original 1967 extras and make-up test for *Planet of the Apes*. The film canister lid bears a handwritten notation by Chambers, "of original extras on first tests, on Panavision film elongated subjects, only one of its kind do not give away! J.C." **\$600 – \$800**



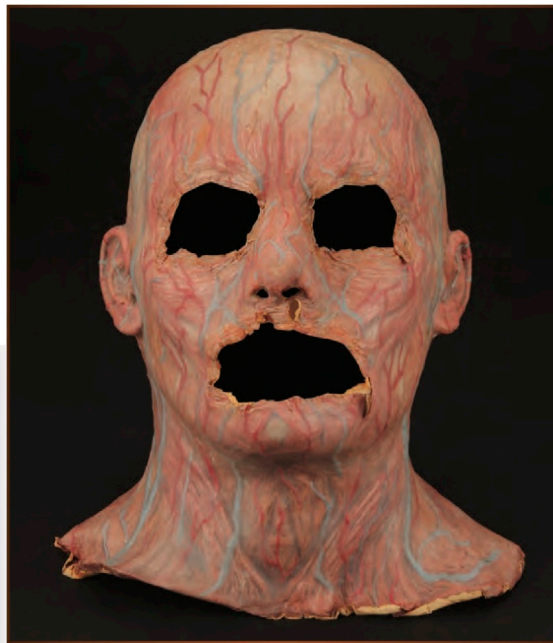
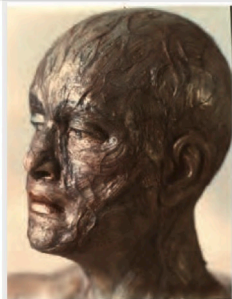
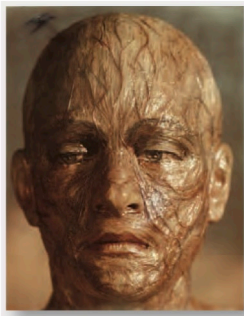
790. PAIR OF JOHN CHAMBERS MUTANT CONCEPT SCULPTS FOR *BENEATH THE PLANET OF THE APES*. (TCF, 1970) Pair of John Chambers Mutant concept sculpt for *Beneath the Planet of the Apes*. Each concept is hand-sculpted in clay and completely hand-painted and detailed with small hairpiece applied on scalp. One sculpt is applied on a cast fiberglass bust; the other on a plaster head with steel base. Both measure approx. 13 in. tall. A piece of sculpting clay has come off the chin of the plaster face; otherwise, remarkable condition. **\$1,500 – \$2,000**



791. BACKGROUND MUTANT FEMALE LATEX MASK, LABELED “DINA” FROM *BENEATH THE PLANET OF THE APES*. (TCF, 1970) Mutant mask of foam latex completely hand-painted and detailed to resemble exposed musculature. Marked internally “Dina.” The mask is split at the rear to allow fitment to the actor’s head. Foam latex remains very supple and exhibits a 4 in. split along the right neck; otherwise, remarkable condition. **\$800 – \$1,200**



792. KIM HUNTER “ZIRA” HEAD STUDY DISPLAY. Study display head of Kim Hunter as “Zira” in *Planet of the Apes*. It features Chambers’ distinctive foam latex facial appliances completely hand-painted and detailed with painted eyes, hand-punched hair and eyelashes. The bust is wrapped in brown cloth and makes for an impressive display piece measuring 16 ½ in. tall x 17 in. wide at shoulders. Housed in a custom display case ordered specifically for the piece by John Chambers so that it could be shown at exhibitions (exhibits a repaired crack in the Plexi). **\$3,000 – \$5,000**



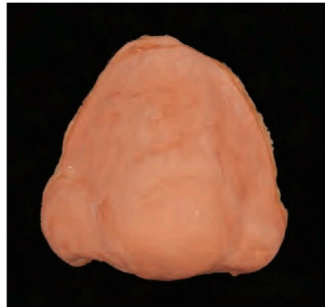
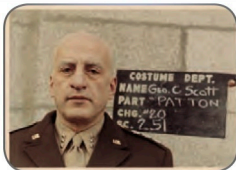
793. NATALIE TRUNDY "ALBINA" MUTANT MASK FROM *BENEATH THE PLANET OF THE APES* . (TCF 1970) Natalie Trundy "Albina's" mutant mask of foam latex completely hand-painted and detailed to resemble exposed musculature. Marked internally "Natalie." The mask is split at the rear to allow fitment to the actor's head. The foam latex remains very supple exhibiting only slight cracking at the sides of the mouth, nose and eyes; otherwise, remarkable condition. Includes 13 make-up department test Polaroids of mutant bust and 8 in. x 10 in. still of Natalie Trundy and Victor Buono from the film. **\$3,000 – \$5,000**



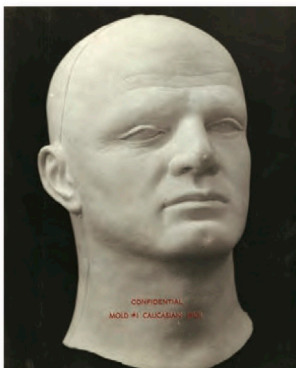
794. JOHN CHAMBERS THREE PERSONAL MAKE-UP CASES, ONE WITH CALIPERS FOR MOLD-MAKING, ONE FOR HAIR APPLICATION, ONE FOR MAKE-UP. These three cases represent John Chambers' personal tools of his trade: individual cases for mold-making, hair application and make-up. The mold-making case is a red tool box with drawers that are filled with an assortment of files, picks, serrated and flat metal scrapers, a wooden shaping tool, chisel, several aluminum calipers, brushes, dremel tips and two business card holders filled with dozens of cards, many with handwritten notations by Chambers. The hair application case is wood and features a variety of hair bundles in different shades, a hair-blending comb, numerous needlenose pliers, scissors, combs, gel and hairpiece adhesive. Inside the lid he has handwritten, "*John Chambers, Make-Up Artist, Hollywood, Calif.*" and many of the implements are engraved with Chambers' initials "J.C." The make-up case is a trove of brushes, combs, eyeliner and eyeshadow pencils, rouge, mascara, pomade, greying dyes, all shades of pancake make-up, bobby pins, barrettes, and other accouterments needed to transform his subjects into not only fantastic creatures, but also making the stars even more beautiful. It bears a "Chambers" appliance logo on the lid, likely salvaged from an old stove and used as a decorative element. This incredible collection is in Excellent condition, very well cared for and organized and appears exactly as John left it on his last project with everything in its proper place. Most implements are either handwritten with his initials or engraved to identify ownership on various jobs. Cases vary in sizes from 14 x 8 x 12 in. to 20 x 11 x 9 in. A fascinating glimpse into this legendary artist's working tools and represents a unique opportunity of acquisition. **\$12,000 – \$15,000**



795. SCREEN-USED COVER MASK AND MUTANT DISGUISE MASK FROM *BENEATH THE PLANET OF THE APES*. (TCF, 1970) A screen-used cover mask marked "Doug," a production painted "Doug" minus the eyebrows. Also includes four unused production "Dina" Mutant masks and a screen-used female Mutant cowl. \$600 – \$800



796. GROUP OF 15+ FOAM LATEX PROSTHETIC NOSES FROM GEORGE C. SCOTT FROM *PATTON*. (TCF, 1970) Collection of 15 foam latex prosthetic nose appliances worn by George C. Scott in his Academy Award-winning role as controversial general, George S. Patton. Includes 30+ continuity test shots, ranging from 3 ¼ in. x 4 ¼ in. to 8 in. x 10 in., of Scott in black and white and color, as well as other cast members. Some photos exhibit curling. Foam latex remains supple and in Excellent condition. \$400 – \$600



797. JOHN CHAMBERS CIA "IDENTITY TRANSFORMATION" FIELD KIT. Very few people know of John Chambers' connection with the Central Intelligence Agency. Very little is published about it, but what has been de-classified is the subject of a major film release in 2012 concerning the true story of John Chambers' (played by John Goodman) involvement in helping a group of Americans escape from Iran during the Iran Hostage Crisis in 1980. In the 1960s Chambers was recruited by the Technical Services Division of the CIA, responsible for providing supporting gadgets, disguises, forgeries, weapons, etc. for the agency. This is the "identity transformation" field kit John Chambers designed for the CIA. The lockable black "Monarch" hard plastic briefcase, measuring approx. 18 in. x 13 in. x 5 in., opens to reveal an illuminating makeup mirror affixed to the lid wired to a large battery pack rechargeable via a cigarette lighter adapter. Beside the mirror are elastic straps holding five makeup brushes and a clear tube with wax stick and a clear box with hinged lid. The bottom of the case has vacuum-formed sections to hold various glass containers for makeup application and a large box with hinged lid holding two smaller boxes: one marked "Eye-brows Chinese Muff" and the other "Sideburns," both with hair appliances within. Also present are four circular Max Factor Pan-Cake makeup containers of varying skin tones. A circular sticker on top of the case reads, "The Sentinel Corporation / If this item is unclaimed please phone toll free (800)421-0671 (in Calif. (213)277-6100 collect) Attention!! Key tag no. 70560." Included is a three-ring binder with gilt lettering reading, "CONFIDENTIAL" on the top and bottom of both the front and back covers. The cover reads, "Latex Overhead Masks". The album contains 29 pages, each featuring a 7 ¾ in. x 9 ½ in. black & white photograph of a latex overhead mask with an embossed stamp reading, "CONFIDENTIAL" with the mold number and ethnicity of the mask being depicted, such as "Caucasian (Big)", "Oriental/Caucasian", "Caucasian/Mongoloid", "Negroid/Caucasian/Oriental", "Caucasian/Negroid", "Oriental/Negroid", "Oriental", "Negroid", etc. A fascinating glimpse where Hollywood meets reality in the mysterious CIA underworld. \$2,000 – \$3,000



802. STUNT WOODEN RIFLE FROM *PLANET OF THE APES*. (TCE, 1968) Stunt wooden rifle of stained wood with painted black barrel, metal faux bolt action breech on the top and webbed nylon carrying strap. Measures 35 in. long and exhibits light scuffs and scratches. **\$400 – \$600**



803 GUARDS TUNIC FROM *BENEATH THE PLANET OF THE APES*. (TCE, 1970) This Guard tunic worn by an underground dwelling mutant sentry is 1 of only 4 such costumes made for the first sequel to *Planet of the Apes*, which posits a society of radiation scarred atomic bomb worshipping humans living beneath the rubble of New York City. Beige tunic with thick padded vertical and horizontal piping on the torso and down the arms, yellow insert, zipper and snap closure at the front. Stamped inside "W.C.C. #25." A few light marks; otherwise, very near as screen-used. **\$2,000 – \$3,000**



804. HERO WORKING GORILLA RIFLE FROM *BENEATH THE PLANET OF THE APES*. (TCE, 1970) This rifle is constructed of two aluminum shells with leather strap, and is the only known example of this rifle with the working modified World War II carbine still inside, as all of the rifles from this film were cannibalized by gun collectors and the outer shells discarded. The original custom bayonet is attached and functional on the stock of the barrel. This is not just the only complete rifle known to exist, but also the finest example extant. Rendered inoperable, barrel plugged. **\$4,000 – \$6,000**



PRICES REALIZED
Icons of Hollywood Auction

Auction Date: December 15-16, 2011

PROFILES IN HISTORY
26901 Agoura Rd Ste 150
Calabasas Hills, CA 91301
310.859.7701 tel
310.859.3842 fax
www.profilesinhistory.com

Lot	Price	Lot	Price	Lot	Price	Lot	Price
229	200	287	325	337	325	395	500
230	800	288	200	338	600	396	600
232	600	289	550	339	3,250	400	300
233	550	290	1,300	340	1,800	401	1,400
234	1,200	291	4,750	341	1,100	403	2,500
235	275	292	600	342	1,400	405	650
237	400	293	600	343	650	407	400
238	275	294	600	344	400	408	300
239	200	295	650	345	275	409	300
241	200	296	650	346	1,100	410	300
242	200	297	350	347	500	412	400
246	200	298	275	349	800	413	400
248	225	299	2,000	351	300	414	200
250	200	300	3,000	352	1,000	415	750
251	500	301	325	355	500	416	700
253	300	302	400	356	200	417	400
254	800	303	500	357	350	418	325
255	600	304	200	358	2,750	419	200
256	550	306	400	360	500	420	300
257	8,000	307	375	362	900	421	200
259	475	308	1,200	363	550	422	200
260	425	309	200	365	600	425	250
261	375	310	700	366	400	428	850
262	475	311	200	367	400	429	200
263	500	312	400	368	1,000	430	400
264	600	313	400	369	600	431	550
265	425	314	650	370	1,500	432	5,000
266	250	315	650	373	2,000	433	2,750
267	425	316	1,000	374	27,500	434	17,000
268	375	317	900	376	2,000	435	300
269	500	318	300	377	300	436	200
270	325	319	700	378	800	437	2,250
271	500	320	300	379	27,500	438	300
273	200	321	500	380	250	441	850
274	475	322	500	381	2,750	442	5,000
275	1,200	323	650	382	10,000	443	1,900
276	900	324	750	383	12,000	445	2,500
277	650	325	325	384	400	446	800
278	650	326	325	385	1,200	447	800
279	275	328	300	386	800	448	3,000
280	450	329	325	387	600	450	8,000
281	300	330	550	388	6,500	452	3,000
282	475	331	200	389	2,750	453	6,000
283	450	332	325	390	1,000	454	170,000
284	175	333	300	391	1,200	455	2,250
285	375	334	375	392	1,200	456	3,000
286	200	336	700	393	400	457	10,000

PRICES REALIZED
Icons of Hollywood Auction

Auction Date: December 15-16, 2011

PROFILES IN HISTORY
26901 Agoura Rd Ste 150
Calabasas Hills, CA 91301
310.859.7701 tel
310.859.3842 fax
www.profilesinhistory.com

Lot	Price	Lot	Price	Lot	Price	Lot	Price
707	600	759	4,750	811	950	864	800
708	550	760	15,000	812	1,500	865	440,000
709	1,000	761	1,700	813	8,000	866	19,000
710	275	762	6,000	814	2,000	867	1,000
711	2,250	763	325	815	300	868	1,400
712	1,500	765	6,000	816	1,700	870	10,000
713	2,000	768	4,000	817	75	871	3,000
714	375	769	1,100	818	1,400	872	1,100
715	1,500	770	300	819	1,500	874	1,300
716	3,750	771	1,900	820	5,500	875	30,000
717	17,000	772	750	821	650	877	300
718	3,750	773	1,200	822	2,000	878	300
719	80,000	774	5,500	823	100	879	125
721	60,000	775	900	824	1,000	880	300
722	37,500	776	950	825	3,000	881	700
723	5,500	777	2,500	826	750	882	750
724	4,000	778	7,500	828	8,000	883	100
725	475	779	5,000	829	2,000	891	2,000
726	600	780	5,000	830	800	892	200
728	500	781	15,000	831	125	894	300
729	6,000	782	800	832	800	895	500
730	1,200	783	600	833	650	896	225
731	300	784	1,100	834	650	897	1,000
732	420,000	785	325	835	1,900	898	2,500
733	40,000	786	10,000	836	1,300	899	800,000
734	80,000	787	3,750	837	950	901	40,000
735	16,000	788	1,400	838	1,600	902	700
736	12,000	789	1,800	839	2,500	903	15,000
737	40,000	790	16,000	840	1,200	904	550
739	800	791	2,250	841	3,750	906	2,000
740	225	792	4,750	842	2,000	908	1,200
741	1,700	793	5,500	843	9,000	909	30,000
742	750	794	65,000	846	2,000	910	2,000
743	11,000	795	10,000	848	4,000	912	42,500
744	22,500	796	400	849	1,700	913	1,200
745	7,000	797	20,000	850	2,000	914	1,000
746	3,250	798	500	852	375	915	6,000
747	4,750	800	950	853	250	917	6,000
748	1,000	801	375	854	550	919	5,500
749	3,750	802	1,200	855	325	921	2,500
750	3,000	803	2,000	856	2,000	923	1,300
751	300	804	4,000	857	500	924	15,000
752	7,500	805	30,000	858	4,750	925	500
753	6,500	806	7,000	859	22,500	930	11,000
754	200,000	808	2,000	860	15,000	931	17,000
757	9,500	809	18,000	861	1,200	932	2,500
758	6,500	810	4,000	863	1,500	934	30,000