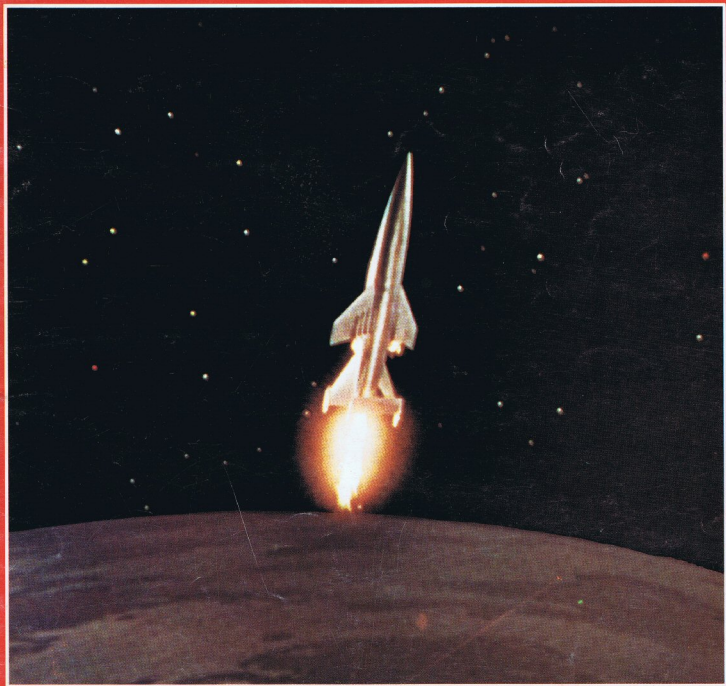
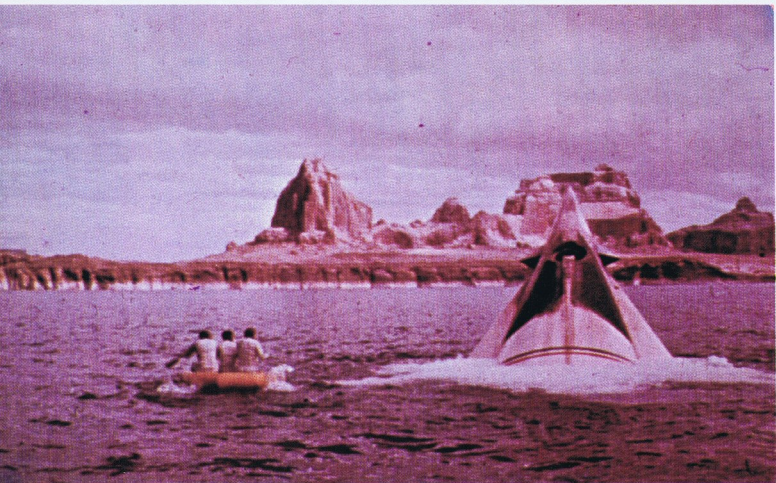


STARLOG *photo guidebook*

spaceships

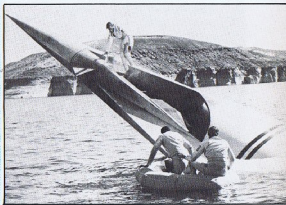
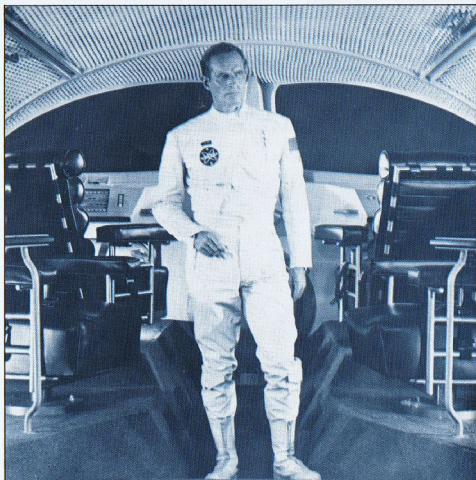


MOVIES OF 1960s



Planet of the Apes
20th Century Fox (1968) Panavision and DeLuxe Color

This sleek, single-stage spaceship appeared in several impressive scenes at the beginning of the film. It contained a crew of four: Captain Taylor, Dodge, London, and a young woman who did not survive the trip because of a leak in her suspended animation cubicle. The craft ended up traveling into the distant future, and splashing down in a lake on Earth. It is seen here just before it sank beneath the water. The vehicle was later used in *Escape From the Planet of the Apes* (1971).



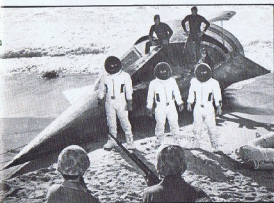


Beneath the Planet of the Apes
20th Century Fox (1970) Panavision and DeLuxe Color

This sequel to *Planet of the Apes* (1968) picked up right where the introductory film left off. Cutting back on costs, the single-stage rescue rocket was only seen once—after it had already crashlanded. Unlike its forerunner, with its crew of four, this craft only contained two men: Brent and "Skipper." The latter was injured on touchdown, and died soon afterward. Brent was then on his own, stranded on an "alien" world (actually Earth in the future), with ape and mutant menaces all around.

Escape From the Planet of the Apes
20th Century Fox (1971) Panavision and DeLuxe Color

The third entry in the "Apes" series began with a single-stage rocketship being recovered at sea by the Navy; very little of the craft was shown. This opening sequence was obviously another attempt at keeping the budget down (in fact, there were no special effects in this movie). At least one scene was actually filmed *inside* the ship, as it approached Earth; this was not part of the final footage, though. When the three passengers were rescued, they revealed themselves to be man-sized chimpanzees: Cornelius, Zira and Milo.



Those Fantastic Flying Fools
American International (1967)
Panavision and Color

This British spoof, which was also known as *Blast Off!*, was based on the works of Jules Verne. It concentrated on an attempt in 1875 to launch a bullet-shaped missile to the Moon using a new explosive called "Bulovite," that had been invented by a Professor Von Bulow. The Moonship designed by Sir Charles Dillworthy suffered some major setbacks, but was finally made ready for launching. Instead of the intended crew, however, a Russian spy named Bulgeroff, along with two other men, took off into the sky, headed for parts unknown.

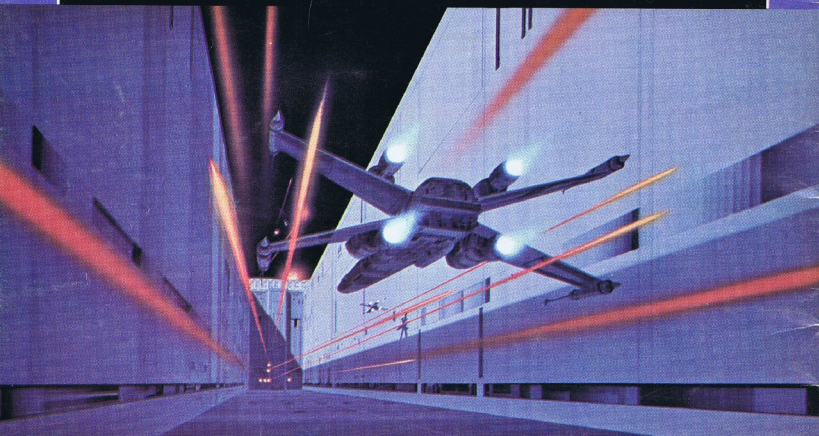
(below)

The Ambushers
Columbia (1967) Technicolor

Donald Hamilton's fictional spy, Matt Helm, was ordered to track down a top secret American space vehicle prototype, which turned out to be a flying saucer. He teamed up with the female pilot of the craft, and together they penetrated the criminal organization that had stolen the invention in an attempt to conquer the world. The hero ended up on a motorcycle, chasing the saucer as it sped along a railroad track.



SPACESHIPS



Art: P. McQuarrie

A STARLOG Photo Guidebook

©20th Century-Fox Corp. 1977